

Calico and Cotton

A Potholder Quilt Sew Along by Temecula Quilt Co

Read Finishing Options on page two before beginning for important finish as you go information.



Block One ~ 36 Patch ~ Make two blocks

From a variety of light, medium and dark scraps, cut:

72 squares, $1\frac{1}{2}$ " x $1\frac{1}{2}$ ", use diagram for color inspiration

1. Lay out two blocks, each with 36 squares, $1\frac{1}{2}$ " x $1\frac{1}{2}$ "
2. Sew the squares in each row together. Join the rows alternating seams at intersections. Block should measure $6\frac{1}{2}$ ", including seam allowances.

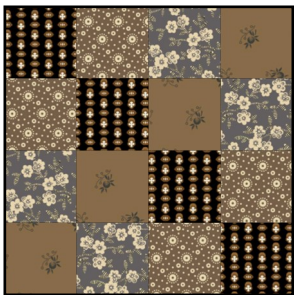


Block Two ~ 64 Patch ~ Make two blocks

From a variety of light, medium and dark scraps, cut:

128 squares, $1\frac{1}{4}$ " x $1\frac{1}{4}$ ", use diagram for color inspiration

1. Lay out two blocks, each with 64 squares, $1\frac{1}{4}$ " x $1\frac{1}{4}$ "
2. Sew the squares in each row together. Join the rows alternating seams at intersections. Block should measure $6\frac{1}{2}$ ", including seam allowances.

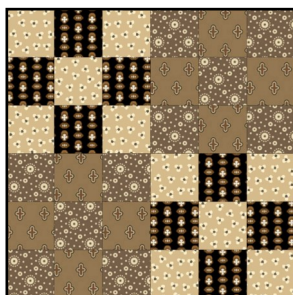


Block Three ~ Four Patch ~ Make two blocks

From a variety of light, medium and dark scraps, cut:

32 squares, 2" x 2", use diagram for color inspiration

1. Make eight Four Patch blocks using 2" squares.
2. Lay the blocks out in two rows of two. Sew the squares into rows. Join the rows to make a Four Patch block measuring $3\frac{1}{2}$ " square, including seam allowances. Sew units together to make two Four Patch blocks, measuring $6\frac{1}{2}$ " square, including seam allowances.



Block Four ~ Nine Patch ~ Make two blocks

From a variety of light, medium and dark scraps, cut:

72 squares, $1\frac{1}{2}$ " x $1\frac{1}{2}$ ", use diagram for color inspiration

1. Make eight Nine Patch blocks using $1\frac{1}{2}$ " squares.
2. Lay the blocks out in three rows of three. Sew the squares into rows. Join the rows to make a Nine Patch block measuring $3\frac{1}{2}$ " square, including seam allowances. Sew units together to make two Nine Patch blocks, measuring $6\frac{1}{2}$ " square, including seam allowances.

Calico and Cotton

A Potholder Quilt Sew Along by Temecula Quilt Co



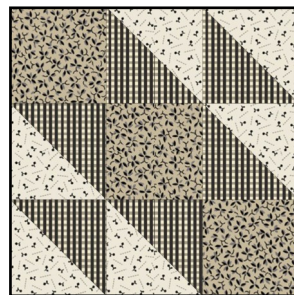
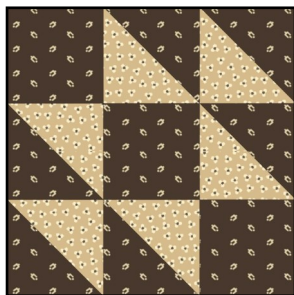
Block Five ~ Churn Dash ~ Cutting for one block
Make 4 blocks using diagram for color inspiration
From print one, cut:

1 square, $2\frac{1}{2}$ " x $2\frac{1}{2}$ "
2 squares, 3" x 3"
4 strips, $1\frac{1}{2}$ " x $2\frac{1}{2}$ "

From print two, cut:
2 squares, 3" x 3"
4 strips, $1\frac{1}{2}$ " x $2\frac{1}{2}$ "



1. Using 3" squares make four half-square-triangles. Draw a diagonal line on wrong side of each lighter square. Sew $\frac{1}{4}$ " from both sides of line. Cut on line. Trim each unit to $2\frac{1}{2}$ " square, including seam allowances.
2. Join $1\frac{1}{2}$ " x $2\frac{1}{2}$ " strip along $2\frac{1}{2}$ " side. Press seam toward dark.
3. Lay out block in three rows. Sew the units in each row together. Join the rows alternating the seams at intersection.

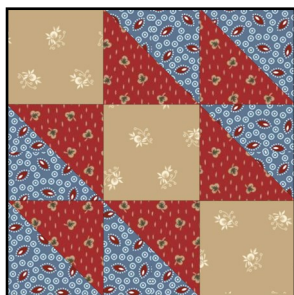


Block Six ~ Double X ~ Cutting for one block ~
Make 4 blocks using diagram for color inspiration

From a variety of light, medium and dark scraps, cut:

3 squares, $2\frac{1}{2}$ " x $2\frac{1}{2}$ "
3 squares, 3" x 3" | print one
3 squares, 3" x 3" | print two

1. Using 3" squares make four half-square-triangles. Draw a diagonal line on wrong side of each lighter square. Sew $\frac{1}{4}$ " from both sides of line. Cut on line. Trim each unit to $2\frac{1}{2}$ " square, including seam allowances.
2. Lay out block in three rows. Sew the units in each row together. Join the rows alternating the seams at intersection.
3. Press block measuring $6\frac{1}{2}$ " square, including seam allowances.



Finishing Options |

Pot Holder Style | This is the perfect take along project if you finish as you go. Follow these steps:
Layer each block for quilting with the block, batting (I use a natural colored flannel instead of batting) and a back. Add machine or hand quilting. Finish with a single thickness binding.

Traditional Style | If you prefer to finish your quilt in the traditional style. Make each block and see finishing diagram on next page.

Calico and Cotton

A Pot Holder Quilt Sew Along by Temecula Quilt Co

Finishing the Quilt | Pot Holder Style Finished Quilt 26" x 29"

1. Once you have all your blocks complete and bound it is time to start assembling. Using the diagram, assemble each row using a ladder or whip stitch. Sew on the back side of the blocks.
2. Measure the length of your rows and cut 3 strips, 1 1/2" x length of your row. Layer each strip and machine or hand quilt and bind.
3. Using sashing strips and block rows join everything together. Enjoy!



Finishing the Quilt | Traditional Style Finished Quilt 26 3/4" x 29"

From a variety of prints, cut:

12 sashing strips, 1 1/4" x 6 1/2"

3 sashing strips, 2" x 27 1/2"

1. Lay out quilt top in rows with blocks separated with sashing strips. Sew each row together.
2. Join rows separated by long sashing strips.
3. Quilt as desired and bind. Enjoy!

